



*INSTITUTE FOR
SUCCESSFUL LONGEVITY™*

Faculty Affiliates Meeting
Thursday, Jan. 17th, 2024
1:30 pm via Zoom



Announcements

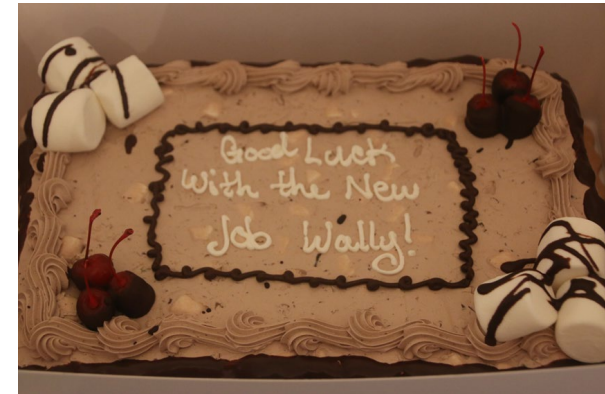
- Victoria Simon left us Jan. 5 so we will be operating a simplified set of activities until staffing issues are resolved.
- If you have any special awards or promotions/changes in tenure status that you'd like ISL to announce, please let Neil or Lynn know.





Send-Off Party for Associate Director Wally Boot

- We are pleased that so many of you attended Wally's farewell party and signed cards there.





Announcements: New ISL Member

- Dr. Qing-Xiang “Amy” Sang is a Pfeiffer Professor for Cancer Research in Chemistry and Biochemistry and an Endowed Chair Professor of Cancer Research at the Florida State University.
- She received her Ph.D. degree from Georgetown University in Washington D.C. in 1990.
- Dr. Sang received National Research Service Award, NIH Individual Postdoctoral Fellowship and many other awards and grants.
- Dr. Sang has discovered and characterized several novel human metalloproteinases that are involved in cancer invasion and angiogenesis and age-related inflammatory diseases. She has made significant contributions to the field of biochemistry and enzymology, particularly for deciphering structure-function relationship of metalloproteinases and molecular mechanisms of cancer and inflammatory diseases.





Resources for Affiliates

- ISL offers affiliates many resources
 - <https://isl.fsu.edu/faculty-resources>
- ISL registry for research studies
- Planning Grants
- Esther & Del Scholarship for Graduate Students
- Student Poster Day

The screenshot displays the website for The Institute for Successful Longevity. At the top, the title "THE INSTITUTE FOR SUCCESSFUL LONGEVITY" is centered. Below it is a navigation menu with links for HOME, FACULTY RESOURCES, FACULTY AFFILIATES, NEWS, BLOG, VOLUNTEER, ADVISORS, THE DIRECTOR, DONATE, and THE APPT PROJECT. The main content area features a large banner with the ISL logo and the text "INSTITUTE FOR SUCCESSFUL LONGEVITY" and "CAN YOU HELP FSU RESEARCH?". Below the banner, there are two columns of text. The left column is titled "ISL Faculty Resources" and contains a section titled "HOW TO BECOME AN ISL FACULTY AFFILIATE" with detailed instructions. The right column is titled "ISL's VOLUNTEERS — THE PARTICIPANT REGISTRY" and contains information about the registry and how to register.

THE INSTITUTE FOR SUCCESSFUL LONGEVITY

HOME / FACULTY RESOURCES / FACULTY AFFILIATES / NEWS / BLOG / VOLUNTEER / ADVISORS / THE DIRECTOR / DONATE / THE APPT PROJECT

HOME / ISL FACULTY RESOURCES

INSTITUTE FOR SUCCESSFUL LONGEVITY
CAN YOU HELP FSU RESEARCH?

ISL Faculty Resources

HOW TO BECOME AN ISL FACULTY AFFILIATE

Faculty Affiliates are at the core of the Institute for Successful Longevity and its interdisciplinary approach to longevity research. ISL has more than 90 Faculty Affiliates from fields across the FSU campus.

Full time faculty, including research faculty, and postdoctoral fellows may become Faculty Affiliates. To apply, send a current CV and a short research statement (one page) that indicates your work related to the mission of ISL to ISL@fsu.edu. Also, please include a high-resolution photograph and a link to your own faculty page, if available.

Upon approval by current Faculty Affiliates and the ISL Joint Advisory Board, you will become an ISL Faculty Affiliate, with your bio and photo posted on the [ISL Faculty Affiliate web page](#).

Affiliates have the following privileges:

- Access to ISL's Participant Registry, our volunteer database, for studies of successful longevity, subject to approval of the project by the FSU Human Research Review process.

ISL's VOLUNTEERS — THE PARTICIPANT REGISTRY

The Institute for Successful Longevity recruits volunteers to help researcher in their work in longevity. We currently have more than 2,500 older adults from Tallahassee and the surrounding area in our Participant Registry, our database of individuals who have expressed an interest in being study volunteers.

ISL Faculty Affiliates who have registered as ISL researchers may contact these individuals to see if they wish to participate in their research studies.

To register as an ISL researcher, go [here](#) and create a log-in.

After you log in, [follow these instructions](#) to submit a study request. Once the ISL Director has approved your request, you may use the Participant Registry to gather study volunteers.

Adults over the age of 60 can join [ISL's Participant Registry here](#).

ISL's PLANNING GRANTS



ISL Participant Registry Campaign

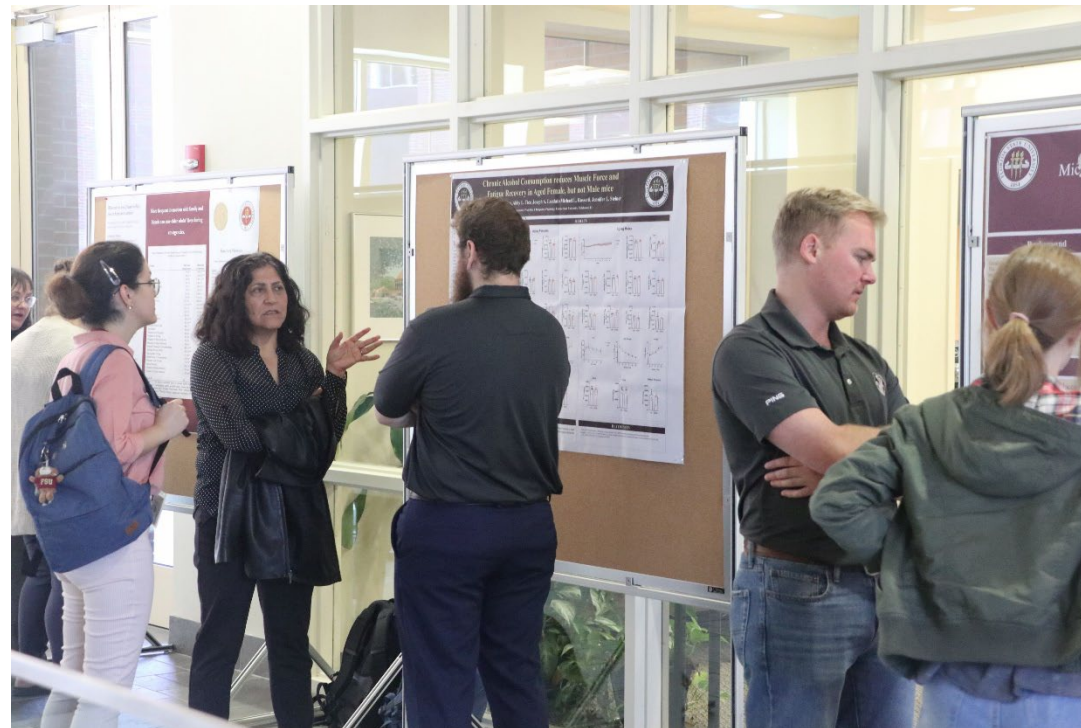
- The Participant Registry mailout ended in December. We have increased the registry to over 3500 volunteers.
- Please also remember that the registry is available to our Affiliates for recruiting participants for research studies approved by the FSU IRB. Response rate has been dropping over time to about 10-20% in some cases so request enough participants to reach your desired sample size.
- If you come across a disconnected phone number or an email address that gets returned by mailer-daemon, please let us know so we can follow up with the participant and remove them from the list or update their contact information.
- We would greatly appreciate you letting us know when a work has been published which has used the registry.
- Please send over the citations of your works as they are completed, and we will add it to our running list of publications which have used the ISL Participant Registry.





Esther Del Grosser Scholarship and Student Poster Day

- Announcing our **2024 Esther & Del Grosser Scholarship** for student research. The \$1,000 award is open to your graduate students. The winner will be awarded at our Student Poster Research Day in March 2024. We will have a website where you can easily submit applications.
- We will also be hosting our **Student Poster Day, tentatively set for March 28, 1-3 pm in the Atrium of the Psychology Building.**
- **We** showcase all the amazing work our students are doing in the research field. There will be cash prizes for first, second and third best posters. The poster award could involve graduate or undergraduate students working with you.





ISL Planning Grants for 2024-2025

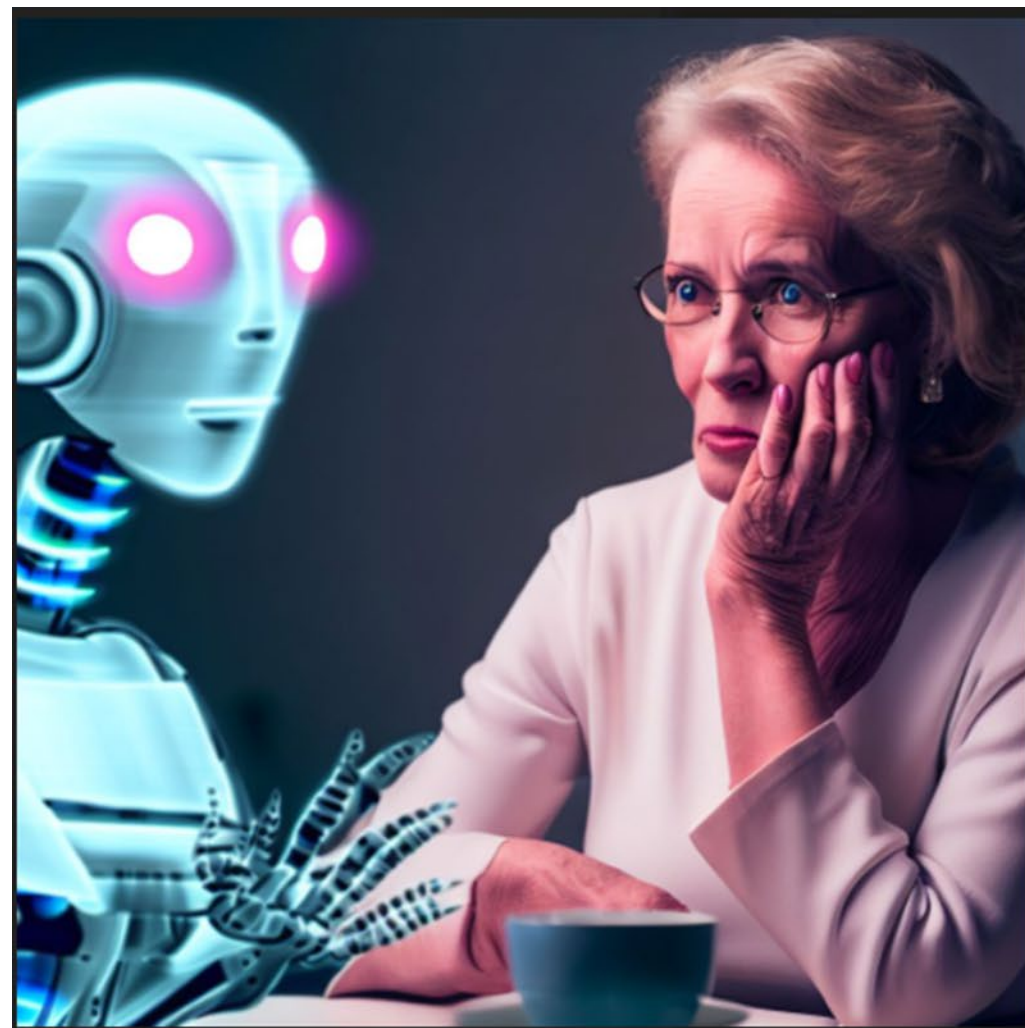
- The Dates for next year's Planning Grants have been announced.
- The award opened **December 1st 2023** for application submissions and closes on **March 26th, 2024**.
- <https://isl-fsu-sm.smapply.us/>
- ISL can award a total of 3 interdisciplinary grants and provides \$25,000 in funding per project. More updates will come as the open dates get closer.
- We will have two “Collaborative Collisions” for this program. One on December 11 2 pm and another in January 2024.





Neil Charness Brown Bag Jan. 22 noon

- “Should Older Adults Trust Chatbots?”
- Enrolling and re-enrolling in Medicare is something that 99% of Americans age 65+ yr must do to get health insurance
 - It is a difficult task
- Can first generation chatbots such as Alexa and Google Home Assistant and 2nd generation LLM’s such as ChatGPT and BARD provide trustworthy information?
- [Join Zoom Meeting](#)



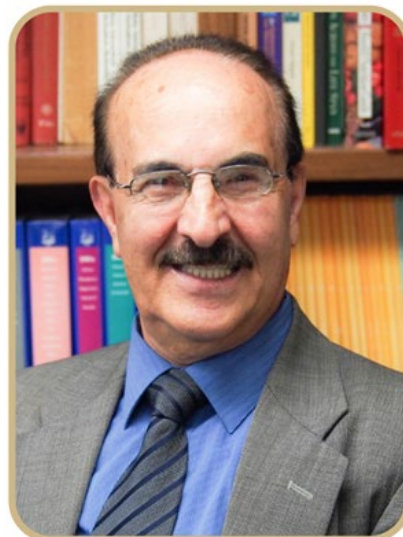


Bahram Arjmandi Brown Bag, Feb. 19, noon

ISL BROWN BAG LECTURE SERIES

**"Nutraceuticals in the
Management of Osteoporosis
and Osteoarthritis"**

**-ISL Faculty Affiliate
Bahram Arjmandi, Ph.D.
February 19, noon, via Zoom**



- Dr. Bahram H. Arjmandi, a Professor at Florida State University's Department of Health, Nutrition & Food Sciences, presents his research on the role of nutraceuticals and functional foods in preventing and treating chronic disorders of inflammatory origin.
- His work focuses on osteoporosis and osteoarthritis, exploring how nutraceuticals like soy and its isoflavones, dried plum and its polyphenols, and other dietary elements can positively impact these conditions.
- This research offers valuable insights into the potential of food-based approaches for managing and preventing these widespread health issues.

[Join Zoom Meeting](#)



INSTITUTE FOR SUCCESSFUL LONGEVITY

ISL.fsu.edu

FLORIDA STATE UNIVERSITY



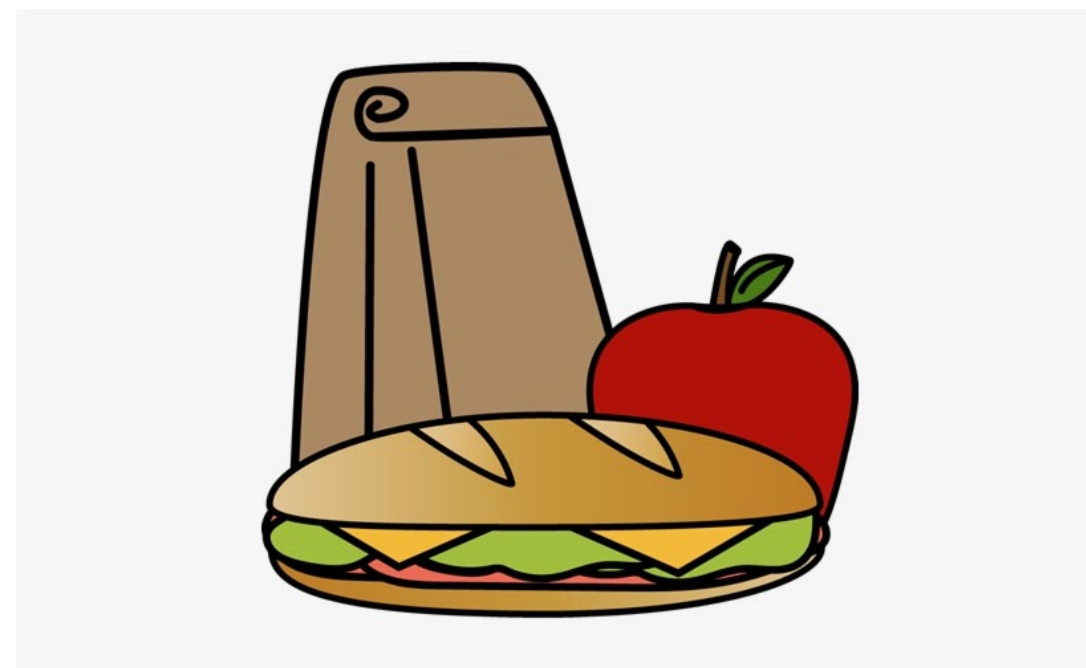
ISL Brown Bag Lecture Series

Spring 2024 Semester Brown Bags

As teaching schedules might have changed, we have not decided if we are going to continue to host the Brown Bags on Monday or switch them to Tuesday. Please vote in the poll we sent around regarding the day you would most be able to attend the Brown Bags in the Spring.

- January, Dr. Neil Charness – “Should Older Adults Trust Chatbots?”, Jan. 22, noon
- February – Dr. Bahram Arjmandi – “Neutraceuticals in the Management of Osteoporosis and Osteoarthritis”, Feb. 19, noon
- March- still need a speaker
- April 8th, Dr. Yang Hou- “Title TBD”

We are looking for one more volunteer for the March date for Spring Brown Bag Series Speakers. **We encourage those with planning grant funding to present their results as well as new affiliates to inform everyone about your areas of expertise and/or to showcase their research.**





Dr. Charness Schedule of Away Events

- Jan. 25-27, Assistive Technology Industry Association (ATIA) meetings in Orlando
- Feb. 8-11, CREATE Scientific Advisory Meeting in Ft. Lauderdale

