



# **SCHOOL OF TEACHER EDUCATION**

**ASSISTANT PROFESSOR  
(9 OR 12 MONTH FACULTY)**

**SCIENCE, MATHEMATICS OR  
STEM EDUCATION**

**FSU** | **COLLEGE OF EDUCATION,  
HEALTH & HUMAN SCIENCES**

## ABOUT THE POSITION

The School of Teacher Education in the Florida State University College of Education, Health, and Human Sciences is seeking candidates for a tenure-earning assistant professor position. The position is specialized in the areas of science, mathematics, or STEM education.

## RESPONSIBILITIES

Applicants will be expected to engage in research and grant writing related to elementary science, mathematics, or STEM education, teach undergraduate and graduate courses, collaborate with Elementary Education faculty related to undergraduate and graduate programming and teacher preparation, advise and mentor Master's and Doctoral students, and provide service to the university, local community partners, and the profession.

## QUALIFICATIONS

- Earned doctorate in Elementary education, Science, Mathematics, or STEM Education (or a related field such as Curriculum & Instruction with a focus on STEM education) by August 2025
- A strong record of scholarship as indicated by peer reviewed journal publications conference presentations, and collaborative projects
- Clear research agenda in Elementary Science, Mathematics, or STEM education.
- Experience teaching in a teacher education program (including Science, Mathematics or STEM education coursework)

## PREFERRED QUALIFICATIONS

- Previous grant experience.
- Three years of teaching experience in elementary science, mathematics, or STEM classrooms.
- Experience supervising teacher candidates in field practicum/internship.

## CONSIDERATIONS

- This is a tenure-earning Faculty position.
- This position requires successful completion of a criminal history background check.
- This position is being advertised as open until filled.
- This position will be filled as a 9-Month or 12-Month position.



## ABOUT THE DEPARTMENT

The School of Teacher Education, and the Elementary Education program strive to develop a deep understanding of, and respect for, our students and colleagues. Our goal is to prepare teaching professionals who not only transform the lives of their K-12 students, but also seek to improve their schools, communities, academic disciplines, and professions. For more information about the program, visit <https://cehhs.fsu.edu/elementary-ed>

## ABOUT THE COLLEGE

The roots of FSU's College of Education, Health, and Human Sciences date back to the university's establishment, and it is the oldest college of its kind in Florida. Recently expanded in 2023, the College is home to six academic departments united through a common goal to maximize human potential. In total, the College includes the Department of Educational Leadership & Policy Studies, Department of Educational Psychology & Learning Systems, Department of Health, Nutrition, and Food Sciences, Department of Human Development & Family Science, Department of Sport Management, School of Teacher Education, numerous research centers, and three laboratory schools (Florida State University School, FSU Pembroke Pines Charter School, and The Collegiate School at FSU Panama City). The College of Education, Health, and Human Sciences serves over 4,000 students via 201 full-time faculty and 76 full-time staff.

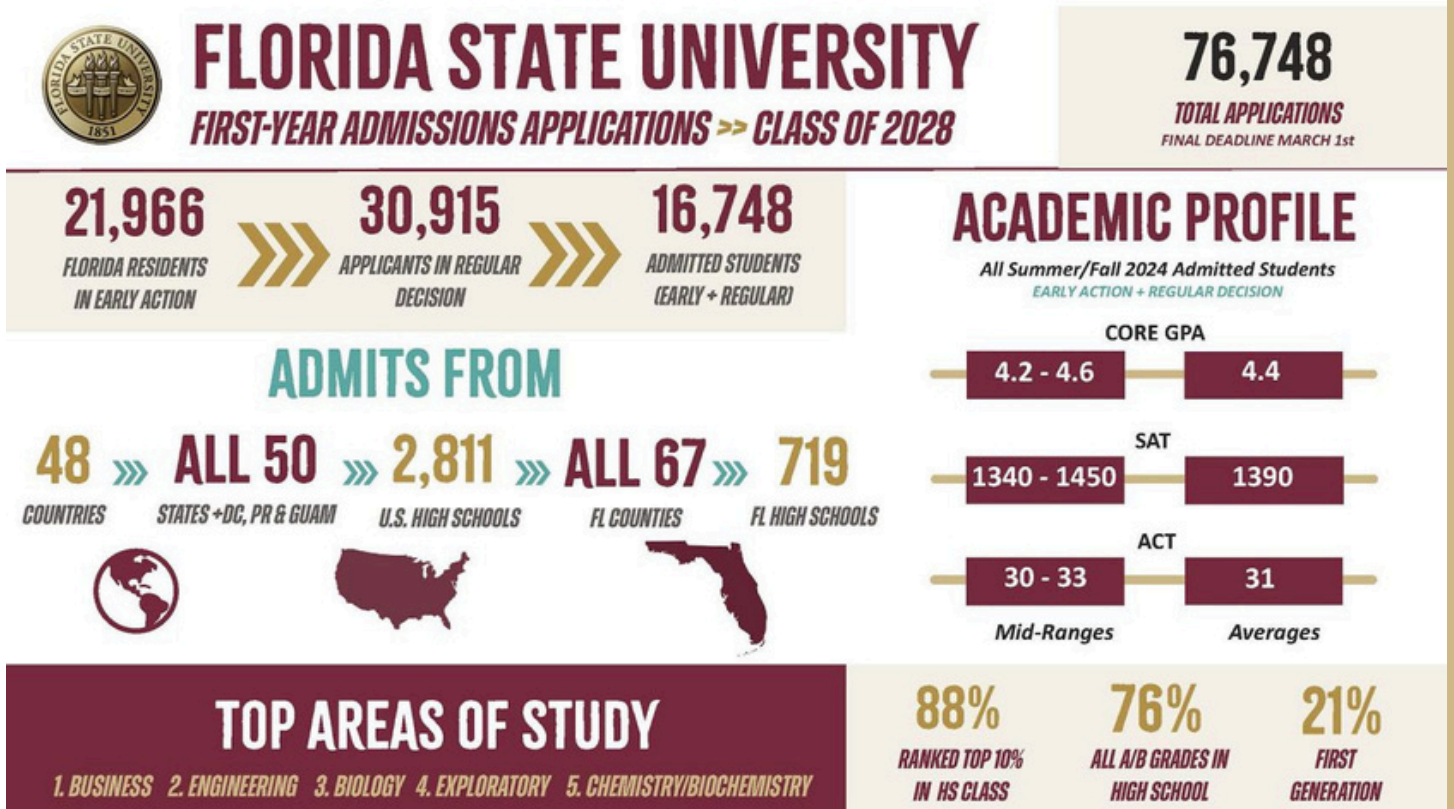
For more information about the College of Education, Health, and Human Sciences visit: [cehhs.fsu.edu](https://cehhs.fsu.edu).



# ABOUT THE UNIVERSITY

Founded in 1851, Florida State University is a comprehensive, national, graduate-research university offering more than 280 outstanding academic and professional degrees in top programs to over 45,000 students. Consistently ranked among the best public universities in the nation, Florida State University provides extraordinary opportunities for undergraduate students to build a strong foundation in their chosen fields; study abroad at the University's overseas campuses; engage in scores of service activities; benefit from world class library and technical facilities; participate in extensive intramural and recreational events; and interact with some of the finest students and faculty in the nation in a distinctive, welcoming environment. The Florida State University Athletics Department sponsors 20 teams that honor the Seminole Tribe of Florida. Collectively, these teams have won a number of team national championships, and over 100 team conference championships, as well as numerous individual national and conference titles. The University instills the strength, skill, and character essential for lifelong learning, personal responsibility, and achievement.

Florida State University holds the Carnegie Research University designation as an R1 research institution. FSU has been officially designated as a preeminent research university by the Florida Legislature as a result of having met a set of rigorous benchmarks. FSU is ranked #23 among national public institutions in the last U.S. News and World Report rankings.



# ABOUT TALLAHASSEE, FLORIDA

Florida State University is located in the capital city of Florida, Tallahassee. Tallahassee boasts a metropolitan area population of nearly 400,000 residents, making it the largest city in the Florida Big Bend and Florida Panhandle region, and the main center for trade and agriculture in the Florida Big Bend and Southwest Georgia regions. Over 70,000 college students make Tallahassee their home, and they enroll either at Florida State University, Florida A&M University, or Tallahassee Community College. Known for its beautiful canopy roads, excellent K-12 schools, abundant sunshine, and mild winters, Tallahassee is the site of the Florida State Capitol, Supreme Court of Florida, Florida Governor's Mansion, and nearly 30 state agency headquarters. Tallahassee is also home to many entertainment venues, theaters, museums, parks and performing arts centers. In 2015, Tallahassee was awarded the All-American City Award by the National Civic League for the second time.



## HOW TO APPLY:

If qualified and interested in a specific Faculty job opening as advertised, apply to Florida State University at <https://hr.fsu.edu/facultyjobs>. If you are a current FSU employee, apply via myFSU > Self Service.

Applicants are required to complete the online application with all applicable information. Applications must include education details even if attaching a Vita.

Applications should include a letter of application, curriculum vita, a statement of their research agenda, a statement that describes their approaches to teaching, and names of three references with contact information.

Transcripts, work samples (such as teaching artifacts or manuscripts), and three letters of recommendation will be required of candidates selected for an interview.

Review of candidates will begin immediately and will continue until filled. We urge interested candidates to submit materials as soon as possible.

## CONTACT INFORMATION

Sherry A. Southerland

Search Committee Chair:

[ssoutherland@admin.fsu.edu](mailto:ssoutherland@admin.fsu.edu)



### Equal Employment Opportunity

An Equal Opportunity/Access/Affirmative Action/Pro Disabled & Veteran Employer.

FSU's Equal Opportunity Statement can be viewed at:

[hr.fsu.edu/PDF/Publications/diversity/EEO\\_Statement.pdf](https://hr.fsu.edu/PDF/Publications/diversity/EEO_Statement.pdf)